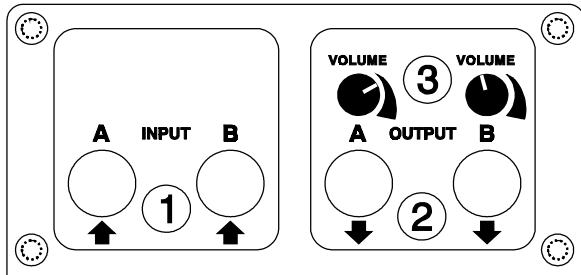


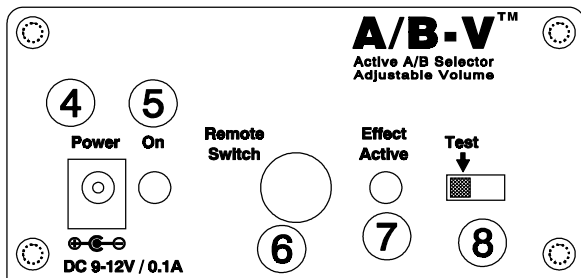
Owners-Manual

The A/B-V is an active switch selector. Even high impedance pick-ups can be connected to the input without loss of high frequencies. (*1 Mohm input impedance!*) The internal input buffer produces a powerful output signal - perfect for most applications. (*Low impedance out!*)

CONNECTIONS:



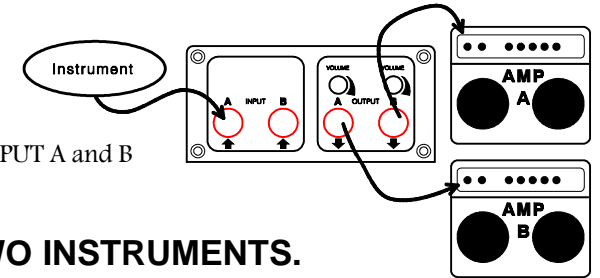
- (1) INPUT jacks: The input jacks A & B of the unit.
- (2) OUTPUT jacks: The output jacks A & B.
- (3) VOLUME control: The volume controls for A & B.



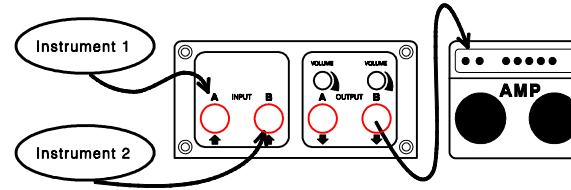
- (4) PSU jack: Connect any regulated power supply. You can use voltages from 9V DC up to 15V DC.
- (5) POWER ON : Lights up when the unit is on.
- (6) REMOTE jack: Input for any standard switch. (*latched type!*)
- (7) EFFECT LED : Lights up when the unit is switched to B.
- (8) TEST switch: Switches the unit, same as using the remote jack.

SWITCH BETWEEN TWO AMPLIFIERS

Connect one Guitar or one Preamp to INPUT A. Connect two amplifiers to OUTPUT A and OUTPUT B. You can select amplifiers A or B. You can set the OUTPUT GAIN for OUTPUT A and B by adjusting the VOLUME-POTS.



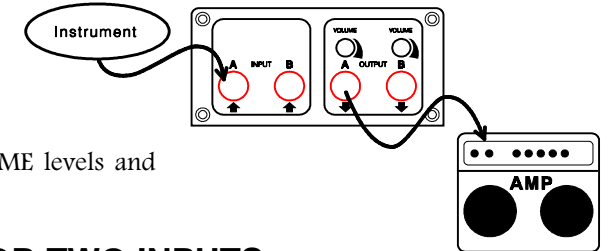
SWITCH BETWEEN TWO INSTRUMENTS.



Connect two Guitars or two Preamps to INPUT A and B. Connect one amplifier to OUTPUT B. You can select instrument 1 or 2. You can set the OUTPUT GAIN by adjusting VOLUME-POT B.

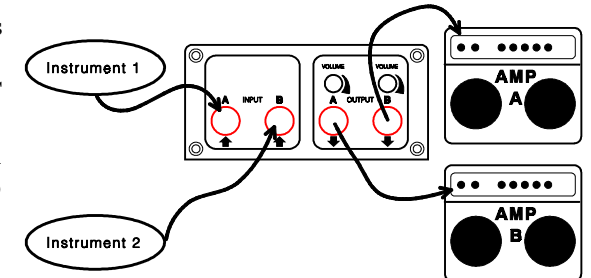
PRESET TWO VOLUME LEVELS:

Connect one Guitar or one Preamp to INPUT A. Connect one amplifier to OUTPUT A. You can set two different VOLUME levels and switch from one to the other.



CROSS-SELECTOR FOR TWO INPUTS AND TWO OUTPUTS:

Connect two Guitars or two Preamps to INPUT A and B. Connect two amplifiers to OUTPUT A and OUTPUT B. Now you can change from INPUT A to OUTPUT B and from INPUT B to OUTPUT A.



NOTE: We recommend the Nobels MF-2 or MS-4 as MASTER CONTROLLER for all switching functions.

If you need more information, please ask your local dealer!