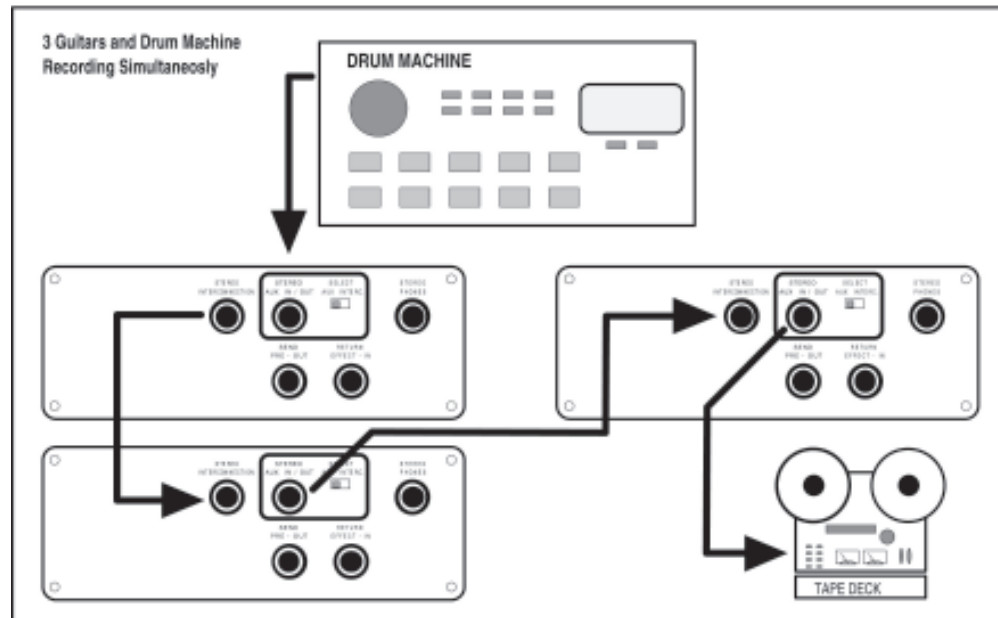
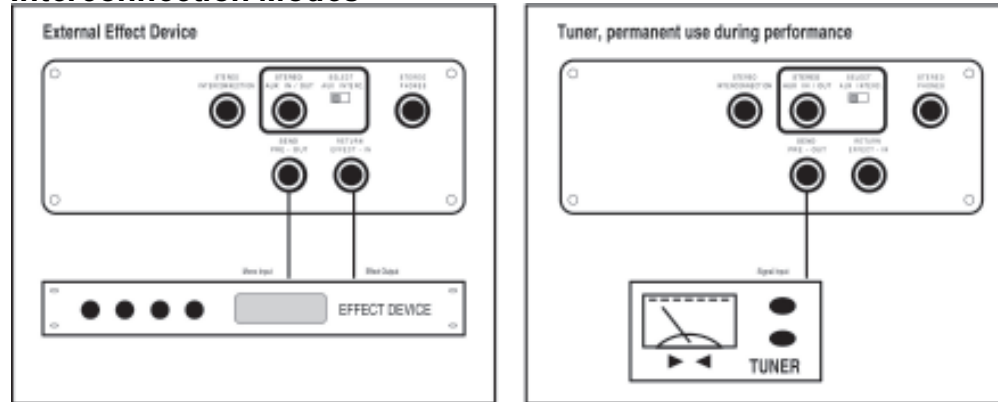


Interconnection Modes

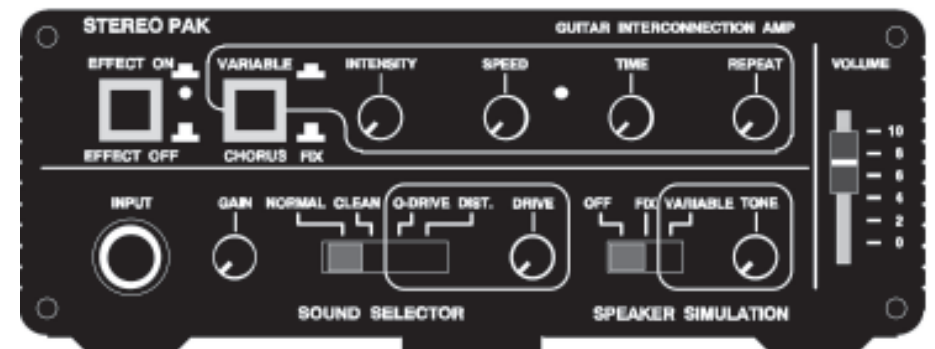


MOBELS™

STEREO-PAK BEDIENUNGS ANLEITUNG

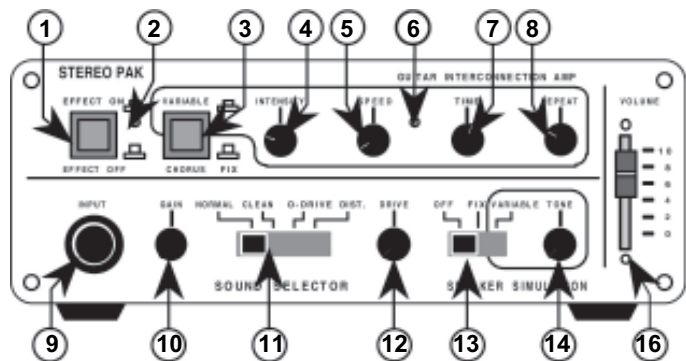
"practising together + recording in stereo"

- Connect to a Playback or Drummachine - easy
- Connect to a 2. Guitar-Player and his PAK - easy
- Connect to a Bass-Player and his PAK - easy
- Connect to a Keyboard-Player +++ - easy
- Connect to a Tape-Recorder - easy
- Everybody hears everybody in Stereo - super
- Record your hit simultaneously - fantastic



Battery-Operation : possible!
Headphones : included!

The STEREO AMP for practising, stage and home-recording



THE STEREO PAK is a portable stereo headphone amp incorporating best possible sounds and effects of use to every guitar player. Two or more players, each equipped with a **STEREO PAK** or **BASSPAK** and a conventional stereo cable can play together, each hearing his own and the other player's sound simultaneously in full stereo. Rhythm machine or drum computer can be additionally added to these two signals and all three can be simultaneously recorded. Even more players can be connected to this chain.

SWITCHING ON

To switch the **STEREO PAK** on please install the supplied 9V battery in the battery compartment (21) at the back of the unit or plug a stabilized 9V DC/200mA power supply into the DC jack (22). Plugging a guitar cable into the input jack (9) switches the unit on automatically. The **STEREO PHONES** jack for your headphones (20) is on the back panel of the unit. Now switch the **SOUND SELECTOR** (11) to position "NORMAL".

The **EFFECT ON/OFF** button (1) switches the effect section on or off (green LED (2) on). Set it in position "OFF". Set the volume with the **VOLUME** control (16) to approx. position 8. Turn the volume pot of your instrument to max. position. Now turn the **GAIN** control (10) until the output of your instrument and the input sensitivity of the **STEREO PAK** match:

No distortion should be heard, even when the strings are hit hard.

We designed the GAIN electronic to slightly increase bass response when low-output pickups are used (such as single coils) and to slightly increase presence when turned more to low position in connection with high-output pickups (such as humbuckers, etc.).

SOUND SELECTOR

Choose one of the following four sounds with the **SOUND SELECTOR** switch (11):

NORMAL - CLEAN - OVERDRIVE - DISTORTION

SPEAKER SIMULATION

The integrated speaker simulation circuit can be switched to three different positions with the switch (13):
OFF - SPEAKER SIMULATION off.
FIX - SPEAKER SIMULATION on; fixed preset.
VARIABLE - SPEAKER SIMULATION on, **TONE** control (14) is active, you can set the desired sound. The **TONE** control (14) shifts the cut off frequency to get more or less treble. (*upper harmonics*)

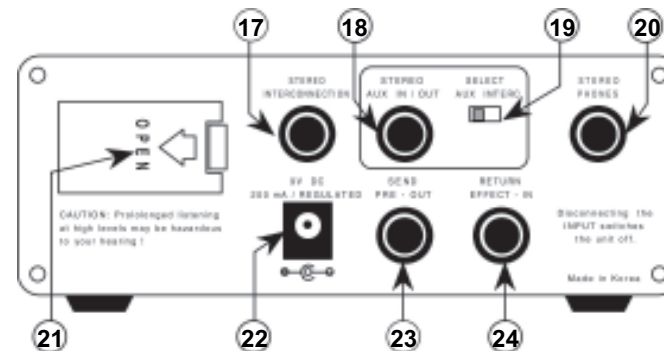
EFFECT SECTION

The **EFFECT ON/OFF** button (1) switches the effect section on or off (green LED-indication (2) on). In **CHORUS FIX** position - button (3) up - the stereo chorus preset is active. In **VARIABLE** position - button (3) down - it is possible to change the following parameters of the integrated delay circuit:

INTENSITY (4) - SPEED (5) - TIME (7) - REPEAT (8)
 The **SPEED** control (5) changes the frequency (*speed*) of the modulation from slow to fast. The red LED (6) flashes to indicate the chosen speed. The intensity of the modulation can be set with the **INTENSITY** control (4). The **TIME** control (7) manages to change the delay time from 2 to approx. 25ms. The **REPEAT** control (8) sets the amount of feedback, i.e. how often the signal will be repeated.

NOTE: Each control of the **EFFECT SECTION** is designed with an extreme range to make best effects possible. It is not useful to set **INTENSITY** control and **TIME** control to max. position at the same time. High frequency noise would be heard!

TYPICAL SETTINGS	INTENSITY	SPEED	TIME	REPEAT
Stereo Small Room	☺	☺	☺	☺
Stereo Slap Back	☺	☺	☺	☺
Stereo Flanger	☺	☺	☺	☺
Stereo Chorus	☺	☺	☺	☺



CONNECTIONS

HEADPHONES:

The headset supplied with the **STEREO PAK** has been specially designed to deliver maximum frequency response and acoustic compatibility. It is also possible to use any stereo headset equipped with the compatible input jack. Connect the headphones to socket **STEREO PHONES (20)** on the back panel of the unit.

RECORDING:

The **INTERCONNECTION** jack (17) must be connected via stereo cable to the inputs of a tape recorder. The output gain will not be affected by the **VOLUME** control (16). The **AUX IN/OUT** jack (18) may be additionally used for recording purposes (switch **SELECT (19)** to position "AUX"). In this mode, the output gain can be adjusted by use of the **VOLUME** control (16). All signals fed into the **AUX IN/OUT** socket (18) can be recorded simultaneously with the guitar signal - in stereo! (*for example a drummachine, a playback or another BASS PAK or STEREO PAK etc...*)

AMPLIFIERS:

There are different possibilities to connect your **STEREO PAK** to guitar amps:

- SEND (23):** mono output, no effect signal
- AUX IN/OUT (18):** stereo output with effect signal, output gain affected by **VOLUME** control (16)
- INTERCONNECTION (17):** stereo output with effect signal, output gain **not** affected by **VOLUME** control (16)
- PHONES (20):** stereo output with effect signal, output volume affected by **VOLUME** control (16).

It depends on the components of your equipment to figure out, which of these connections are the ultimate.

Check it out by yourself!

NOTE: For all stereo-outputs please use shielded stereo cables with stereo plug only! Other plugs will cause a short on one channel and will shorten battery life.

INTERCONNECTION MODE

Jam together with other players:

You just have to connect the **INTERCONNECTION** jacks (17) or the **AUX IN/OUT** jacks (18) of two or more **STEREO PAKs** or **BASSPAKs** via simple stereo cables. To achieve a perfect mix of all devices, adjust the **GAIN** control (10).

EXAMPLE: RECORDING with one STEREO PAK plus one BASS PAK plus DRUMMACHINE:

Connect the drummachine to the **AUX IN/OUT** jack (18) of the **BASS PAK**. Switch **SELECT (19)** to position "INTERC.". Connect the **BASS PAK** to the **STEREO PAK** with a stereo cable via the **INTERCONNECTION** jacks (17) of each unit. Connect channel 1 + 2 (*or left and right*) of your tape deck with stereo cable to the **AUX IN/OUT** jack (18) of the **STEREO PAK**. Switch **SELECT (19)** of this unit to position "INTERC.".

Ready - let the tape go!

EXTERNAL EFFECT DEVICES

You want to have **stereo effect** units, like digital delays or reverbs, linked to your **STEREO PAK**? No problem. Connect the mono input of your effect device to the **SEND** jack (23) of the **STEREO PAK**. Then connect both stereo outputs of your effect device to the **AUX IN/OUT** jack (18) - **SELECT** switch (19) to position "INTERC.". If you use a **mono effect** device, it's output should be connected to the **RETURN** jack (24) of the **STEREO PAK**.

IMPORTANT NOTES:

Please use high quality, shielded cables only. Don't take your **STEREO PAK** in the shower - in other words: please treat it carefully, only cleaning it with a dry duster. Use good, leakproof batteries only. Please realize: battery life is limited and you are working with a high powered unit. Disconnecting the **INPUT** switches the unit off and will save battery life!

O.K. - now let's go: enjoy your STEREO PAK!

CAUTION: Prolonged listening at high levels may be hazardous to your hearing!

Required PSU (Power Supply Unit): 9V / DC, 200 mA min. electronically stabilized plug: STP-1 (2.1 hole diameter)